

# GEAR UP FOR WINTER WITH



**QUALITY REPLACEMENT PARTS**  
for Road & Highway Maintenance Equipment

**CALL:** 800.543.6161 • **FAX:** 937.596.5433 • **EMAIL:** SALES@LACAL.COM  
**CAGE CODE:** 3QTA4

VOLUME 19-20

**PLOW ■ SWEEP**  
**MOW ■ LEAF**



Since 1982

901 WEST PIKE STREET / PO BOX 757  
JACKSON CENTER, OH 45334

# PLOW // SWEEP // MOW // LEAF

## WHAT LACAL OFFERS YOU:

- Competitive Pricing on Quality Parts
- Over 17,000 Different Inventory Parts On-Hand
- Courteous Knowledgeable Sales Staff
- Convenient Ordering Hours (7:30am-5:00pm EST)
- Decades of Industry Experience – Continuous Operation Since 1982

## WHAT DO I NEED WHEN I CALL?

1. **MAKE** of Your Machine
2. **MODEL** of Your Machine
3. **SERIAL NUMBER** of Your Machine
4. **PART NUMBER** You Need
5. **PART DESCRIPTION**

Buy Replacement Parts Direct from the Manufacturer and SAVE!

Call Toll-Free: (800) 543-6161 • Fax: (937) 596-5433

## RETURN POLICY

### ▶▶ NO PRODUCT MAY BE RETURNED TO US FOR CREDIT WITHOUT OUR AUTHORIZATION ◀◀

1. All claims and/or adjustment requests must be made within 30 days after receipt of material. Contact your Sales Rep to initiate a return.
2. Return shipping is free of charge on any and all parts returned due to Lacal Equipment's error. Customer will pay return shipping on any and all parts returned due to Customer's error.
3. Restocking fees will be charged on non-stock items only. If Lacal regular stock items are being returned, there will be no restocking fee.
4. Special Order Parts are non-returnable. Lacal Equipment will advise its customers at time of quote and at time of order if any item is Special Order and non-returnable.

### TERMS & CONDITIONS

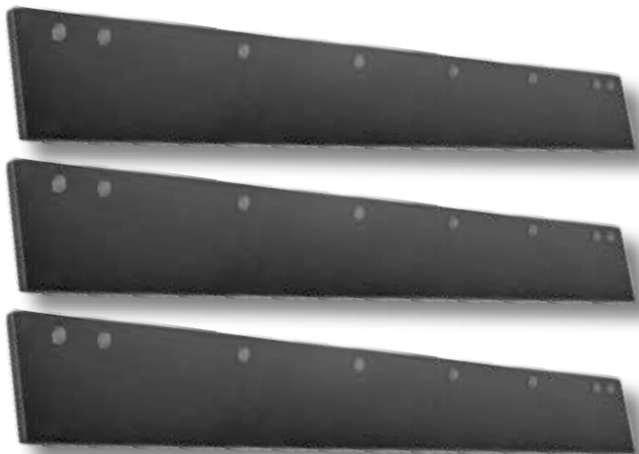
We shall be excused and not be liable for delays in shipment caused by customer's request, labor troubles, shortages of materials, damage to plant, governmental regulations or other cause, similar or otherwise, beyond our control. All original equipment manufacturer's names, drawings, colors and part numbers are used for identification purposes only. We are in no way implying that any of our products are original equipment. All parts are guaranteed to meet with your approval.

**PRODUCT WARRANTY:** All products sold by Lacal Equipment, Inc. are warranted to be free of defects in material and workmanship for a period of 90 days, provided that the part is used in a normal and reasonable manner. The 90-day period commences from the date that the part is received by the end user. If the product should fail to conform to any warranty outlined herein, Buyers Remedy shall be limited to the replacement of the non-conforming products or parts thereof. Lacal Equipment shall not be liable for any damages, lost items, or other expenses that may result from defective parts, nor for the payment of any incidental or consequential damages including, but not limited to, personal injury or property damage.

**RETURNS: NO PRODUCT MAY BE RETURNED TO US FOR CREDIT WITHOUT OUR AUTHORIZATION.** All claims and/or adjustment requests must be made within 30 days after receipt of material. Merchandise manufactured or sold by us is limited to the purchase price of any merchandise proved defective, or at our option, to replacement of such merchandise upon its return to us after making a pro-rata charge for service rendered.

**WORKPLACE COMPLIANCE:** We hereby certify that these goods were produced in compliance with the Fair Labor Standards Act as amended and with the rules and regulations and order issued thereunder. We hereby certify that Lacal Equipment, Inc. is an Equal Opportunity Employer in compliance with executive order and rules and regulation and relevant orders of the Secretary of Labor or as otherwise provided by law.

## Steel Blades



Our Steel Blades are USA-made.

**STOCKED IN THE FOLLOWING SIZES:**

1/2" x 6"      5/8" x 6"      5/8" x 8"

in various lengths & punch patterns.

*Boss, Fisher, Meyer, Western  
and others also available.*

## Polyurethane Blades

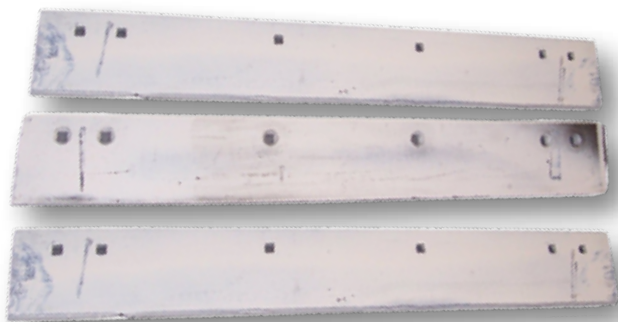


**Rugged  
& Flexible**

Protect plowed surfaces  
with polyurethane blades.

Available in a large variety of sizes,  
punched in-house to your specs!

## Carbide Blades



**Ultra Long Lasting**

**STOCKED IN THE FOLLOWING SIZES:**

3/4" x 6" x 3'

3/4" x 6" x 4'

with Standard Highway Punch

*Other sizes and punch patterns are  
available – please call and ask.*



## Rubber Blades



**STOCKED IN THE  
FOLLOWING SIZES:**

1" x 6"

1 1/2" x 8"

1 1/2" x 10"

1 1/2" x 12"

**PRE-PUNCHED BLADES**

with Standard Highway Punch

In Stock & Ready to Ship for Sizes:

8" x 10'      10" x 10'      12" x 10'

8" x 11'      10" x 11'      12" x 11'

**SPECIAL ORDER BLADES**

Cut and Punched to Your Specifications.

Special Punch Pattern Orders

Ship in 1-2 Days.



**This is just a sample of the parts Local stocks for Snow Plows. Call 800-543-6161 today - We Can Help!**

 <p><b>MUSHROOM SHOES</b> <b>LSSP185H1</b> Mushroom Shoe</p>	 <p><b>BLADE BACKER ANGLES</b> <b>LSSP18125DA</b> 12' Blade Backer Angle <b>LSSP17102DA</b> 11' Blade Backer Angle <b>LSSP18122DA</b> 11' Blade Backer Angle <b>LSSP18121DA</b> 10' Blade Backer Angle</p>	
 <p><b>MUSHROOM SHOE &amp; POST ASSEMBLIES</b> <b>LSSP7230A22</b> Heavy Duty Mushroom Shoe &amp; Post Assembly <b>LSSP7230A11</b> Standard Mushroom Shoe &amp; Post Assembly (shown) <b>LSSP7230A22W0S</b> Post Assembly without Mushroom Shoe</p>	 <p><b>LSSPA43666</b> Grab Link</p>	 <p><b>LSSP5322A3</b> Shackle</p>
 <p><b>ADJUSTING CRANKS</b> <b>LSSP18468A</b> Adjusting Crank <b>LSSP351C</b> Adjusting Crank (shown)</p>	 <p><b>MUSHROOM SHOE POSTS</b> <b>LSSP3546B</b> Standard <b>LSSP9748A</b> Heavy Duty</p>	 <p><b>CYLINDERS</b> <b>LSSPPD832</b> 2½" x 10" Cylinder <b>LSSPP114281</b> 2½" x 10" Cylinder <b>LSSPPD937</b> 3" x 10" Cylinder <b>LSSPP11462E</b> 3" x 10" Cylinder <b>LSSPP11466E</b> 3" x 10" Cylinder</p>
 <p><b>SPRINGS</b> <b>LSSP1980D3</b> Trip Spring (shown) <b>LSSP14791A</b> Torsion Spring</p>	 <p><b>LSSPP1325</b> Lift Chain Assembly, 60"</p>	 <p><b>LSSP1947A</b> Skid Shoe Post</p>

**CALL: 1.800.543.6161 • EMAIL: sales@lcal.com • FAX: 937.596.5433**

*All original equipment manufacturer's names, drawings, colors and part numbers are used for identification purposes only. We are in no way implying that any of our products are original equipment. All parts are guaranteed to meet with your approval.*

***This is just a sample of the parts Local stocks for Snow Plows. Call 800-543-6161 today - We Can Help!***

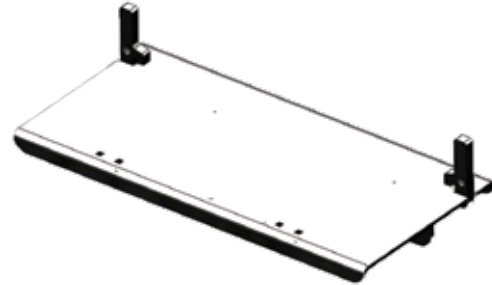


**SKID SHOE ASSEMBLIES**

**LSSP2A00244** Skid Shoe and Post Assembly  
**LSSP2W00254** Skid Shoe Assembly Housing (shown)



**LSSP2W12918** Trip Edge



**LSSP2W13506** Back Plate Weldment



**LSSP2W05340** Skid Shoe



**LSSP2P00259**  
Compression Spring



**LSSP9C09191**  
Trip Edge Spring



**LSSP2A00251** Adjuster Screw



**LSSP2W00245** Pivot Connection



**LSSP2W13508**  
Upper A Frame  
Weldment



**LSSP2P00261**  
Adjuster Screw Crank



**ADJUSTING CRANK  
SCREWS**  
**LSSP5750A**  
**LSSP7628A**  
 Heavy Duty (shown)



**LSSP2P00262** Pivot



**LSSP2P00386** Pin

**CALL: 1.800.543.6161 • EMAIL: sales@lcal.com • FAX: 937.596.5433**

*All original equipment manufacturer's names, drawings, colors and part numbers are used for identification purposes only. We are in no way implying that any of our products are original equipment. All parts are guaranteed to meet with your approval.*

**This is just a sample of the parts Local stocks for Snow Plows. Call 800-543-6161 today - We Can Help!**



**LSSP62100295**  
Axle Hitch Assembly

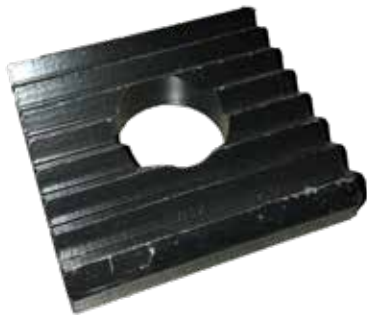


**LSSP62100281** Lift Arm Assembly



### CYLINDERS

- LSSP62100383** 2"x10"
- LSSP62100344** 2"x10"
- LSSP62101007** 3"x10"
- LSSP99806239** 3"x10"



**LSSP62100276**  
Bolt Block



**LSSP62100387**  
Skid Shoe



### HINGE ASSEMBLIES

- LSSP62100248** LH
- LSSP62100249** RH



**LSSP62100288** Angle Bolt



**LSSP62100133**  
Spring Box  
Recoil Spring



**LSSP62100131**  
Spring Box Spring, Outside



**LSSP62100132**  
Spring Box Spring, Inside

**CALL: 1.800.543.6161 • EMAIL: sales@lcal.com • FAX: 937.596.5433**



**This is just a sample of the parts Local stocks for Snow Plows. Call 800-543-6161 today - We Can Help!**

 <p><b>LSSP62100157</b> Caster Stem Weldment</p>	 <p><b>LSSP62100156</b> Caster Assembly Spring</p>	 <p><b>LSSP62100239</b> Spring Box Assembly</p>	
 <p><b>PUSH FRAMES</b> <b>LSSP62100728</b> <b>LSSP62100729</b></p>	 <p><b>TRUNNION ASSEMBLIES</b> <b>LSSP62100200</b> Left Hand <b>LSSP62100201</b> Right Hand</p>	 <p><b>LSSP62100151</b> Handle Assembly</p>  <p><b>LSSP62100159</b> Adjusting Bolt</p>	
 <p><b>LSSP62100002R</b> Shoes, Road-Side &amp; Curb-Side</p>	<p><b>TRUNNION ASSEMBLIES</b> <b>LSSP62100200</b> Left Hand <b>LSSP62100201</b> Right Hand</p>	 <p><b>LSSP62102068</b> Mounting Angle</p>	
 <p><b>RIVET PINS</b> <b>LSSP62100121</b> <b>LSSP62100214</b> <b>LSSP62100216</b></p>	 <p><b>LSSP62100031</b> Swivel Block</p>	 <p><b>LSSP62100153</b> Axle Shaft</p>	 <p><b>LSSP62100292</b> Yoke Weldment</p>

**CALL: 1.800.543.6161 • EMAIL: sales@lcal.com • FAX: 937.596.5433**

*All original equipment manufacturer's names, drawings, colors and part numbers are used for identification purposes only. We are in no way implying that any of our products are original equipment. All parts are guaranteed to meet with your approval.*

*This is just a sample of the parts Local stocks for Snow Plows. Call 800-543-6161 today - We Can Help!*



**SKID SHOES**

**LSSPMSC01501** Outer Skid Shoe (left)  
**LSSPMSC01570** Center Skid Shoe (right)

**Cutting Edges**



**STRAIGHT PLOW CUTTING EDGES**

**LSSPSTB00317**      **LSSPSTB03071**  
**LSSPSTB00318**      **LSSPSTB03072**  
**LSSPSTB00319**      **LSSPSTB3242**  
**LSSPSTB03002**      **LSSPSTB07537**  
**LSSPSTB03003**      **LSSPSTB09544**



**V-PLOW CUTTING EDGES**

**LSSPBAX07627**      **LSSPBAX00098**  
**LSSPBAX00097**      **LSSPBAX00099**

**HYDRAULIC CYLINDERS**

**LSSPHYD01603**  
**LSSPHYD01680**  
**LSSPHYD01703**  
**LSSPHYD07013**  
**LSSPHYD08830**  
**LSSPHYD09731**



**LSSPBAX08057**  
Wing Cutting Edge



**LSSPMSC01517**  
Shock Absorber



**TRIP SPRINGS**  
**LSSPMSC01509**  
**LSSPMSC07705**



**LSSPHYD01563** Motor



**LSSPHYD1633** Solenoid



**JOYSTICK SWITCHES**

**LSSPMSC04087** Raise-Lower  
**LSSPMSC04086** On-Off




**CALL: 1.800.543.6161 • EMAIL: sales@lcal.com • FAX: 937.596.5433**

*All original equipment manufacturer's names, drawings, colors and part numbers are used for identification purposes only. We are in no way implying that any of our products are original equipment. All parts are guaranteed to meet with your approval.*



**This is just a sample of the parts Local stocks for Snow Plows. Call 800-543-6161 today - We Can Help!**

 <p><b>SKID SHOE ASSEMBLIES</b>  <b>LSSP49067</b> Standard    <b>LSSP49071</b> Heavy Duty</p>	 <p><b>PRO PLUS CUTTING EDGES</b>  <b>LSSP44284</b>    <b>LSSP44564</b>    <b>LSSP44891</b>  <b>LSSP44285</b>    <b>LSSP44567</b>    <b>LSSP44896</b>  <b>LSSP44561</b>    <b>LSSP44890</b>    <b>LSSP44897</b></p> <p><b>MVP CUTTING EDGES</b>  <b>LSSP28407</b>    <b>LSSP44997</b>    <b>LSSP63678</b>  <b>LSSP44966</b>    <b>LSSP44998</b></p>
--	---

 <p><b>CYLINDERS</b>  <b>LSSP56709</b>  <b>LSSP25200</b>  <b>LSSP25209</b>  <b>LSSP25210</b></p>
---

 <p><b>MOTORS</b>  <b>LSSP2556A</b>    <b>LSSP56058</b>  <b>LSSP56133</b>    <b>LSSP58062</b></p>	 <p><b>LSSP58734</b> Lift Arm</p>	 <p><b>LSSP49230</b> Coil</p>
	 <p><b>LSSP56131K</b> Relay</p>	 <p><b>LSSP23039</b> Trip Spring</p>

**CALL: 1.800.543.6161 • EMAIL: sales@lcal.com • FAX: 937.596.5433**

*All original equipment manufacturer's names, drawings, colors and part numbers are used for identification purposes only. We are in no way implying that any of our products are original equipment. All parts are guaranteed to meet with your approval.*

*This is just a sample of the parts Lactal offers for Snow Plows. Call 800-543-6161 today - We Can Help!*



**CYLINDERS**      LSSP1304010      LSSP05752      LSSP05810      LSSP05984



**VALVES**  
LSSP15917  
LSSP15918  
LSSP15958



**SOLENOIDS**  
LSSP15370  
LSSP15661  
LSSP15358  
LSSP13356  
LSSP13357



**LSSP15659** Coil



**TRIP SPRINGS**  
LSSP12978      LSSP07017



**SKID SHOES**  
LSSP09127 Skid Shoe  
LSSP09592 Shoe Assembly



**LSSP09126**  
Runner/Spindle  
Assembly



**LSSP10514** Lift Arm



**MOTORS**  
LSSP15841  
LSSP15727  
LSSP15054



**SWITCHES**  
LSSP21918      LSSP21919







**LSSP1302005**  
Eyebolt Kit

**CALL: 1.800.543.6161 • EMAIL: sales@lactal.com • FAX: 937.596.5433**

*All original equipment manufacturer's names, drawings, colors and part numbers are used for identification purposes only. We are in no way implying that any of our products are original equipment. All parts are guaranteed to meet with your approval.*

*This is just a sample of the parts Lecal offers for Snow Plows. Call 800-543-6161 today - We Can Help!*

 <p><b>BLADE SAVERS</b>  <b>LSSPAWP1W6</b> 6-inch      <b>LSSPAWP1W8</b> 8-inch</p>	<p><b>POLY SPINNERS &amp; HUBS</b></p> <p><b>UNIVERSAL POLY SPINNER HUBS</b>          for keyway &amp; thru-hole styles</p>   <p><b>POLY SPINNERS in 14", 18", 20", 22", 24"</b>          Clockwise, Counterclockwise and Straight Fin</p>
 <p><b>PLOW MARKERS</b>  <b>AVAILABLE</b> with and without cable          Sizes: 12", 24", 28", 36", 48"</p>	

**Didn't See Your Snow Plow Brand Listed?**

Don't worry... Lecal Equipment also offers PLOW and SPREADER parts for these brands and more:

AIR FLO	FONTAINE	HENDERSON	MEYER	WARREN
BOSS	FOX	HI-WAY	SWENSON	WAUSAU
FDX	FRINK	HORMAN	TARRANT	WESTERN
FISHER	GLEDHILL	KRAUS	TENCO	AND MANY,
FLINK	GOOD ROADS	LARSON	TORWEL	MANY MORE!

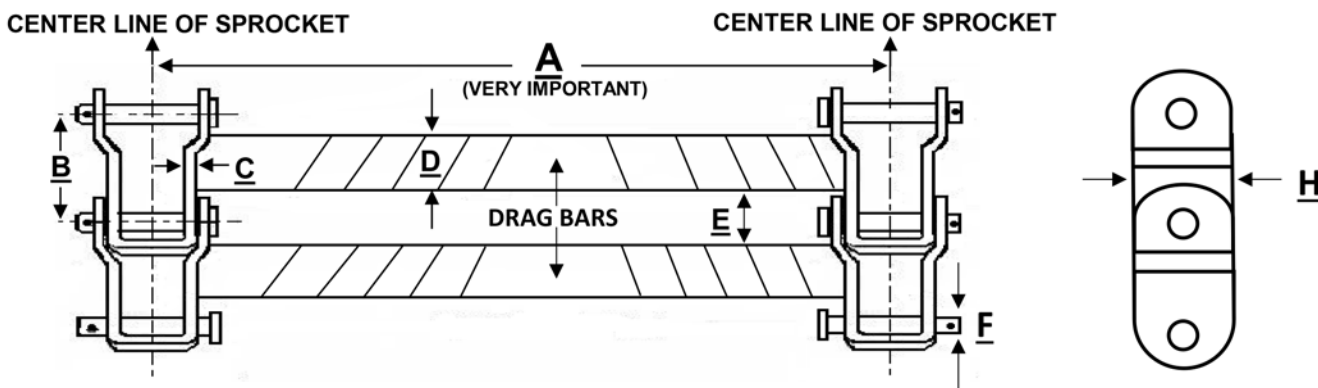
 <p><b>5/8" UNIVERSAL CURB SHOES with Standard Highway Punch</b>  <b>LSSPBB1PP0616</b> 6-inch  <b>LSSPBB1PP0617</b> 8-inch</p>	 <p><b>LSSPAA413</b>          COATES Trip Spring</p>  <p><b>LSSPH231</b>          COATES Skid Shoe</p>	 <p><b>LSSP206062</b>          FLINK Skid Shoe</p>	 <p><b>LSSP1990411</b>          HENKE Skid Shoe Runner</p>
 <p><b>LSSP80094</b>          VALK Front Skid Shoe</p>	 <p><b>LSSP125650</b>          ROOT Skid Shoe</p>	 <p><b>LSSPOR572</b>          VALK Skid Shoe</p>	 <p><b>LSSPAWPRR12</b>          Universal Mushroom Shoe          (fits 2- &amp; 3-bolt patterns)</p>

**CALL: 1.800.543.6161 • EMAIL: sales@lecal.com • FAX: 937.596.5433**

All original equipment manufacturer's names, drawings, colors and part numbers are used for identification purposes only. We are in no way implying that any of our products are original equipment. All parts are guaranteed to meet with your approval.



## SPREADER CHAIN SPECIFICATIONS WORKSHEET



(A) SPROCKET - FROM CENTER LINE TO CENTER LINE = \_\_\_\_\_ (in inches)

(B, C & H) CHAIN SIZE (see table below) = \_\_\_\_\_  
(may be stamped on side of chain)

PINTLE CHAIN SIZES (see diagram above)					
(B) PITCH PIN CENTER-TO-CENTER	(C) THICKNESS OF LINK	(H) LINK HEIGHT	(F) PIN DIAMETER	CHAIN SIZE	AVERAGE TENSILE STRENGTH
1.664	0.125	0.72	0.281	662	8,500 LBS
2.313	0.125	0.975	0.312	667H	9,500 LBS
2.250	0.172	0.937	0.437	667X	15,000 LBS
2.250	0.200	1.060	0.437	667K	20,000 LBS
2.250	0.224	1.062	0.469	667XH	26,000 LBS
2.609	0.200	1.060	0.437	88K	20,000 LBS
2.609	0.250	1.125		88XH	30,000 LBS

TOTAL LENGTH OF CHAIN (in feet) = \_\_\_\_\_ (OR) TOTAL # OF PITCHES = \_\_\_\_\_

BAR THICKNESS (circle one) = 1/4" (.25") OR 3/8" (.375") (D) BAR WIDTH = \_\_\_\_\_

(E) DISTANCE BETWEEN BARS (edge to edge) = \_\_\_\_\_

BAR SPACING (circle one): EVERY LINK - EVERY OTHER LINK - EVERY THIRD LINK

OTHER: \_\_\_\_\_

MAKE OF SPREADER (OPTIONAL) = \_\_\_\_\_  
(USED FOR IDENTIFICATION PURPOSES ONLY)

MODEL OF SPREADER (OPTIONAL) = \_\_\_\_\_  
(USED FOR IDENTIFICATION PURPOSES ONLY)

OEM CHAIN PART # (OPTIONAL) = \_\_\_\_\_  
(USED FOR IDENTIFICATION PURPOSES ONLY)

Submitted By: \_\_\_\_\_  
NAME PRINTED SIGNATURE CONTACT PHONE



Transmit this worksheet to Lacal Equipment via fax/email or simply call our sales representatives to make sure the spreader chain you order is the exact one you need.

LACAL PART NUMBER: \_\_\_\_\_

**CALL: 1.800.543.6161 • EMAIL: sales@lacal.com • FAX: 937.596.5433**

*This is just a sample of our Spreader and Sander parts. Call 800-543-6161 today - We Can Help!*

 <p><b>FLINK BEARINGS</b> LSSP421S4                      LSSP421X</p>	 <p><b>FLINK SPROCKETS</b> LSSP006977                      LSSP020024</p>
 <p><b>LSSP020017</b> FLINK Drag Chain Shaft Weldment</p>	 <p><b>SPINNER MOTORS</b> LSSP1011001    LSSP1011025 LSSP1011003    LSSP1011032 LSSP1011004    LSSP1011033 LSSP1011007    LSSP1011034 LSSP1011008    LSSP1011313 LSSP1011009    LSSP1011314 LSSP1011011</p>
 <p><b>SWENSON BEARINGS</b> LSSP0408005900                      LSSP0408000400</p>	



## SPREADER CHAIN: MADE TO ORDER

**DOUBLE WELDED TOP & BOTTOM BARS**  
to provide a much stronger chain. Available in standard sizes (88K, 667H, 667X and 667XH) as well as custom sizes.  
See our "Spreader Chain Worksheet" on page 12, then call for more information.

1.800.543.6161

**CALL: 1.800.543.6161 • EMAIL: sales@lcal.com • FAX: 937.596.5433**

All original equipment manufacturer's names, drawings, colors and part numbers are used for identification purposes only. We are in no way implying that any of our products are original equipment. All parts are guaranteed to meet with your approval.

**This is just a sample of our parts for Rotary Mowers. Call 800-543-6161 today - We Can Help!**



**BLADE DISHES**



**DRIVELINES**



**SPINDLES & SPINDLE HOUSINGS**



**LAMINATED TAILWHEELS**



**MOWER BLADES**



**SLIP CLUTCHES**



**SKID SHOES**



**BLADE BARS**



**SPRINGS**



**GEARBOX GEARS & SHAFTS**



**SEALS, BEARINGS & BUSHINGS**



**BLADE BOLTS & NUTS**

**CALL: 1.800.543.6161 • EMAIL: [sales@lcal.com](mailto:sales@lcal.com) • FAX: 937.596.5433**

*All original equipment manufacturer's names, drawings, colors and part numbers are used for identification purposes only. We are in no way implying that any of our products are original equipment. All parts are guaranteed to meet with your approval.*



**This is just a sample of our parts for Flail Mowers. Call 800-543-6161 today - We Can Help!**

**Lacal Offers Parts for All the Big Brands.**

ALAMO • BUSH HOG • CAP • EDWARDS • FORD • JOHN DEERE • LAND PRIDE  
TIGER • SCHULTE • SERVIS RHINO • WOODS • AND MORE!

 <p><b>GROUND ROLLERS</b></p>	 <p><b>CUTTER SHAFTS</b></p>		
 <p><b>BLADES, CLEVIS &amp; PINS</b></p>	 <p><b>PULLEYS</b></p>	 <p><b>BRACKETS</b></p>	
 <p><b>SKID SHOES</b></p>	 <p><b>SLIP CLUTCHES</b></p>	 <p><b>GEARBOXES</b></p>	
 <p><b>DRIVELINES</b></p>	 <p><b>SEALS &amp; BUSHINGS</b></p>	 <p><b>BEARINGS</b></p>	 <p><b>GROUND ROLLER BRACKETS</b></p>

**CALL: 1.800.543.6161 • EMAIL: sales@lacal.com • FAX: 937.596.5433**

*All original equipment manufacturer's names, drawings, colors and part numbers are used for identification purposes only. We are in no way implying that any of our products are original equipment. All parts are guaranteed to meet with your approval.*

*This is just a sample of the Leaf Collector parts Lecal offers. Call 800-543-6161 today - We Can Help!*

## Keep Your Leaves from Piling Up with Lecal.

Lecal Equipment offers LEAF COLLECTOR parts for these brands and more:

AMERICAN ROADS • GIANT VAC • OLD DOMINION • GLEDHILL  
GOOD ROADS • TARCO • BIG-T • TARRANT • AND MORE!

## Impeller Fans Built for YOUR Machine

**CUSTOM FAN SPECIFICATIONS SHEET**  
(OEM FANS ALSO AVAILABLE - CONTACT YOUR SALES REP)

FAN WITH BACK PLATE (CIRCLE DESIRED DIRECTION OF ROTATION BELOW)

FAN DIAMETER

OVERALL WIDTH

CW

CCW

SHAFT SIZE (CIRCLE ONE)  
Ø2.188" OR Ø2.250"

BACK PLATES ARE .250" MILD STEEL

6 VANES MANUFACTURED FROM 3/8" ABRASION RESISTANT STEEL

\*\*\*KEY SIZE FOR EITHER SHAFT SIZE IS 1/2"\*\*\*

FAN WITHOUT BACK PLATE (CIRCLE DESIRED DIRECTION OF ROTATION BELOW)

FAN DIAMETER

OVERALL WIDTH

CW

CCW

SHAFT SIZE (CIRCLE ONE)  
Ø2.188" OR Ø2.250"

6 VANES MANUFACTURED FROM 3/8" ABRASION RESISTANT STEEL

MANUFACTURER & PART NUMBER (IF AVAILABLE):

**CALL: 1.800.543.6161 • EMAIL: sales@lecal.com • FAX: 937.596.5433**

***This is just a sample of our parts for Leaf Collectors. Call 800-543-6161 today - We Can Help!***

## Polyurethane Leaf Hose

**Available in These Diameters:**

6" • 7" • 8" • 10" • 12" • 14" • 16" • 18"



- ✓ Reinforced with Wire Helix
- ✓ Superior Abrasion Resistance
- ✓ Clear Walls Make Locating Blockages Easy

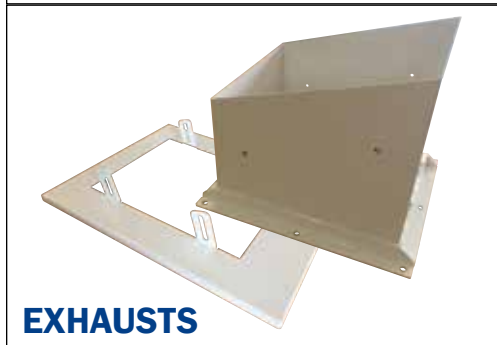
## Flexible Rubber Leaf Hose

**Available in These Diameters:**

8" • 10" • 12" • 16" • 18"



- ✓ Corrugated Walls
- ✓ Abrasion-Resistant Rubber Liner & Neoprene Cover
- ✓ Multi-Ply High-Tensile Woven Fabric Carcass with Spring-Steel Wire Helix
- ✓ 3" End Cuffs



**EXHAUSTS**



**SUCTION NOZZLES**



**LINER SETS**



**HOUSINGS**



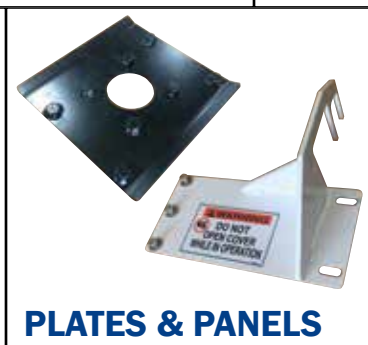
**IMPELLERS**



**SOLENOIDS**



**GRIPS & LATCHES**



**PLATES & PANELS**



**CLUTCHES**

**CALL: 1.800.543.6161 • EMAIL: sales@lcal.com • FAX: 937.596.5433**

*All original equipment manufacturer's names, drawings, colors and part numbers are used for identification purposes only. We are in no way implying that any of our products are original equipment. All parts are guaranteed to meet with your approval.*



*American Owned & Operated for over 37 Years!*

# **WE ARE MANUFACTURERS**



Lactal Equipment is both a manufacturer and a direct supplier to you. Our facility is equipped with a full complement of machines to manufacture standard as well as specialized parts. Low overhead and a skilled workforce ensure that our customers receive quality products with competitive pricing.

## **How can Lactal Equipment benefit you? We offer:**



- Competitive Pricing on Quality Parts
- Over 17,000 Different Inventory Parts On-Hand
- Courteous Knowledgeable Sales Staff
- Convenient Ordering Hours (7:30am-5:00pm EST)
- Decades of Industry Experience – Since 1982

**CALL: 1.800.543.6161 • EMAIL: [sales@lactal.com](mailto:sales@lactal.com) • FAX: 937.596.5433**

All original equipment manufacturer's names, drawings, colors and part numbers are used for identification purposes only. We are in no way implying that any of our products are original equipment. All parts are guaranteed to meet with your approval.



**SAVE  
MONEY  
& TIME**

## *Let Lactal Breathe New Life into Your Sweeper with* **RECONDITIONING SERVICES**

In addition to selling replacement parts, we can recondition your existing sweeper at our facility. We have become an industry leader in reconditioning all makes and models of street and parking lot sweepers for government entities and contractors alike. Our modern facility is equipped with state-of-the-art engineering tools, machine & fab shops, powder-coat paint system and more. We can take your sweeper down to the bare frame and completely recondition it. We have the skilled technicians and technical data to do a first-class job on your machine.

**HERE ARE A FEW EXAMPLES OF OUR WORK. CONTACT US TODAY FOR MORE INFO OR A QUOTE!**



**ELGIN Broom Bear**



**ATHEY MOBIL M9D**



**SCHWARZE M6000**



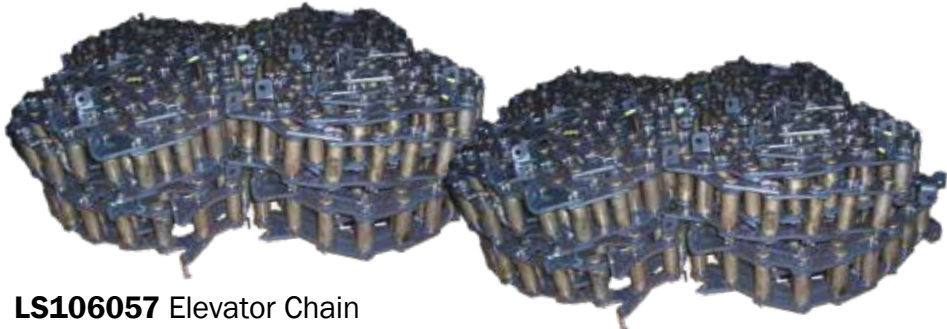
**TYMCO 210**

**CALL: 1.800.543.6161 • EMAIL: [sales@lactal.com](mailto:sales@lactal.com) • FAX: 937.596.5433**

All original equipment manufacturer's names, drawings, colors and part numbers are used for identification purposes only. We are in no way implying that any of our products are original equipment. All parts are guaranteed to meet with your approval.



**This is just a sample of the parts Lecal offers for Sweepers. Call 800-543-6161 today - We Can Help!**



**LS106057** Elevator Chain



**LS106008** Rubber Sprocket  
**LS106009** Idler Wheel



**LS102004** Fiber Guard

**We have parts for your ELGIN model!**  
**BROOM BADGER • Broom Bear**  
**Crosswind • Eagle • Pelican**  
**Road Wizard • Whirlwind**



**LS108002** Dirt Hopper Gate



**DIRT SHOE PLATES**

**LS103103**

**LS103203**



**LS10400891**  
Supporting Bushing



**LS116017**  
Elevator Bearing

**CALL: 1.800.543.6161 • EMAIL: sales@lecal.com • FAX: 937.596.5433**

*All original equipment manufacturer's names, drawings, colors and part numbers are used for identification purposes only. We are in no way implying that any of our products are original equipment. All parts are guaranteed to meet with your approval.*

**This is just a sample of the parts Lecal offers for Sweepers. Call 800-543-6161 today - We Can Help!**

 <p><b>ELEVATOR MOUNTING LINKS</b> LS1084227    LS5710545</p>	 <p>LS1106074 Mount Weldment</p>	 <p>LS5710690 Rear Compartment</p>	
 <p>LS1100857 Water Pump</p>	<p><b>We have parts for your ELGIN model!</b> Broom Badger • BROOM BEAR Crosswind • Eagle • Pelican Road Wizard • Whirlwind</p>		
 <p>LS1096038 Gutter Broom Link Assembly</p>	 <p>LS5713260 Dirt Hopper</p>	 <p>LS1109581 Lift Arm Assembly</p>	
 <p><b>ELEVATOR SHAFTS</b> LS1096857    LS5710401 LS1103188    LS5710414</p>	 <p>LS5710515 Pre-Assembled Elevator</p>		
 <p>LS5710398 Urethane Sprocket</p>	 <p>LS1097905 Core Spindle Weldment</p>	 <p>LS1095987 SB Pivot Assembly</p>	 <p>LS5710408 Urethane Idler Wheel</p>

**CALL: 1.800.543.6161 • EMAIL: sales@lecal.com • FAX: 937.596.5433**

*All original equipment manufacturer's names, drawings, colors and part numbers are used for identification purposes only. We are in no way implying that any of our products are original equipment. All parts are guaranteed to meet with your approval.*



**This is just a sample of the parts Lecal offers for Sweepers. Call 800-543-6161 today - We Can Help!**

 <p><b>LS1058726</b> Dirt Hopper (J)</p>	<p><b>FAN HOUSINGS</b>  <b>LS1059319</b> Lower  <b>LS1059320</b> Upper  <b>LS1089679</b> Upper  <b>LS1094734</b> Lower (shown)</p> 	 <p><b>IMPELLERS</b>  <b>LS1034978</b>      <b>LS1059047</b>  <b>LS1048414</b>      <b>LS1078765</b>  <b>LS1054513</b></p>	
 <p><b>LS1059381</b> Hopper Door</p>	<p><b>We have parts for your ELGIN model!</b></p> <p>Broom Badger • Broom Bear          CROSSWIND • Eagle • Pelican          Road Wizard • Whirlwind</p>	 <p><b>LS1061169</b> Side Broom Link</p>	
 <p><b>PICKUP HEADS</b>  <b>LS1043145</b>      <b>LS1059115</b>      <b>LS1067369</b></p>		 <p><b>LS1064155</b>          Shaft &amp; Flange Weldment</p>	 <p><b>LS1058808</b>          Blower Assembly</p>
 <p><b>LB531</b> Poly Tube Broom</p>	 <p><b>LS1070995</b>          Impeller Pulley</p>	 <p><b>LS1059286</b>          Hose Connector</p>	 <p><b>LS1078903</b>          Pillow Block Bearing</p>
 <p><b>LS1118852</b> Adjust Idler Pulley Kit</p>	 <p><b>LS1059300</b> Pressure Tube</p>	 <p><b>LS1054574</b> Hose (GE)</p>	

**CALL: 1.800.543.6161 • EMAIL: sales@lecal.com • FAX: 937.596.5433**

*All original equipment manufacturer's names, drawings, colors and part numbers are used for identification purposes only. We are in no way implying that any of our products are original equipment. All parts are guaranteed to meet with your approval.*

**This is just a sample of the parts Lecal offers for Sweepers. Call 800-543-6161 today - We Can Help!**

<p><b>DRAG SHOE PLATES</b>                  LS1035484 LH                  LS1035485 RH                  LS1047485 LH                  LS1047486 RH                  LS1054130 RH                  LS1054131 LH</p>		 <p><b>LS1126072</b> Flap Guide Assembly</p>	 <p><b>LS1043658</b> Main Broom Arm</p>
--	---	--	---

 <p><b>AIR SPRINGS</b>                  LS1034525</p>	 <p>LS1034755</p>
--	--

**We have parts for your ELGIN model!**

Broom Badger • Broom Bear  
 Crosswind • EAGLE • Pelican  
 Road Wizard • Whirlwind



**LS1049261** Broom Cover



**LS1120305** Tow Bar Assembly

**DEFLECTORS**

 <p>LS1035800                  LS1035801</p>	<p>LS1044727                  LS1044728</p>
--	---

**TOWBARS**

<p>LS1034280                  LS1035755                  LS1047693</p>	<p>LS1047695                  LS1047696</p>
--	---

**CONVEYOR BELTS**

**STRAIGHT CLEAT**  
 LS1034720  
 LS1049473

**CURVED CLEAT**  
 LS1082388



**HEAVY DUTY ROLLERS**

 <p><b>LS1047988</b> Lower</p>	 <p><b>LS1047989</b> Upper</p>
--	--




**WATER PUMPS**  
 LS1043707  
 LS1055762



**LS1053134**  
 Side Broom Lift Links

**ROLLER BEARINGS**

 <p><b>LS1034473</b> Lower  <b>LS1034474</b> Upper</p>	
--	--



**DIRT HOPPERS**  
 LS1034100  
 LS1034107  
 LS1059808

**CALL: 1.800.543.6161 • EMAIL: sales@lecal.com • FAX: 937.596.5433**

All original equipment manufacturer's names, drawings, colors and part numbers are used for identification purposes only. We are in no way implying that any of our products are original equipment. All parts are guaranteed to meet with your approval.

*This is just a sample of the parts Lecal offers for Sweepers. Call 800-543-6161 today - We Can Help!*

 <p><b>LS1083490</b> Conveyor Takeup Bracket</p>	 <p><b>LS1081037</b> Tilt Lift Arm</p>	 <p><b>TOW BRACKETS</b> <b>LS1074858</b> Left Hand <b>LS1074859</b> Right Hand</p>
 <p><b>DIRT SHOE ASSEMBLIES</b> <b>LS1095994</b> RH <b>LS1095995</b> LH</p>	<p><b>We have parts for your ELGIN model!</b></p> <p>Broom Badger • Broom Bear Crosswind • Eagle • PELICAN Road Wizard • Whirlwind</p>	
 <p><b>ELEVATOR SHAFTS</b> <b>LS106006</b> Upper Shaft <b>LS106011</b> Lower Shaft</p>		 <p><b>LS1043801</b> Dirt Hopper with Gate</p>
 <p><b>MAIN BROOM ARMS</b> <b>LS1082027</b> RH Upper Arm <b>LS1082030</b> LH Lift Arm</p>		
 <p><b>LS1083527</b> Motor Mount</p>	<p><b>CONVEYOR BELTS</b> <b>STRAIGHT CLEAT</b> <b>LS1009989</b> <b>LS1043850</b> <b>LS1049474</b> <b>CURVED CLEAT</b> <b>LS1082386</b> <b>LS1082387</b></p> 	 <p><b>LS0076025</b> Carrier Assembly</p>

**CALL: 1.800.543.6161 • EMAIL: sales@lecal.com • FAX: 937.596.5433**

*All original equipment manufacturer's names, drawings, colors and part numbers are used for identification purposes only. We are in no way implying that any of our products are original equipment. All parts are guaranteed to meet with your approval.*



**This is just a sample of the parts Lecal offers for Sweepers. Call 800-543-6161 today - We Can Help!**



**LS1111115** LH Dirt Shoe Assembly



**LS1084670** Pre-Assembled Elevator



**LS1084576** Elevator Chain

**We have parts for your ELGIN model!**  
 Broom Badger • Broom Bear  
 Crosswind • Eagle • Pelican  
 ROAD WIZARD • Whirlwind



**LS1080096** Gutter Broom Plate



**FLIGHT ASSEMBLIES**

**LS1084442**

**LS6200594W** (shown)



**LS1086754** Dirt Hopper



**LS6201314** Fiber Guard



**LS6206814**  
Main Broom Guard



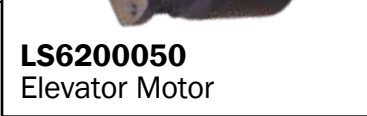
**ELEVATOR SHAFTS**

**LS1084431** Upper

**LS1084432** Lower



**LS1084636**  
Motor Mounting Plate



**LS6200050**  
Elevator Motor



**LS6203039** Bearing



**LS1054346** Gutter  
Broom Link Tilt Weldment



**LS1084635**  
Conveyor Bearing Plate

**CALL: 1.800.543.6161 • EMAIL: sales@lecal.com • FAX: 937.596.5433**

*All original equipment manufacturer's names, drawings, colors and part numbers are used for identification purposes only. We are in no way implying that any of our products are original equipment. All parts are guaranteed to meet with your approval.*



**This is just a sample of the parts Lecal offers for Sweepers. Call 800-543-6161 today - We Can Help!**

 <p><b>SUCTION NOZZLE ASSEMBLIES</b>  <b>LS1064251</b>  <b>LS1064784</b></p>	 <p><b>LS1065756</b> RH Gate Valve Weldment</p>
---	---



**IMPELLERS**  
**LS1031978**      **LS1064431**  
**LS1048414**      **LS1081469**

**We have parts for your ELGIN model!**  
 Broom Badger • Broom Bear  
 Crosswind • Eagle • Pelican  
 Road Wizard • WHIRLWIND



**LS7670000** Water Pump



**DEFLECTOR CHUTES**  
**LS1071795** RH    **LS1071576** LH



**LS1066223** Hose, 5" cuffs



**SUCTION NOZZLES**  
**LS1020313**      **LS1063055**



**LS1083580** Shutter



**LB133** Combo Tube Broom



**LS1088508** Motor Mount



**LS1078903**  
 Pillow Block Bearing



**CASTER ASSEMBLY**  
**LS1016056**  
**LS1060596**



**LS1016763**  
 Banded Blower Belt

**CALL: 1.800.543.6161 • EMAIL: sales@lecal.com • FAX: 937.596.5433**

*All original equipment manufacturer's names, drawings, colors and part numbers are used for identification purposes only. We are in no way implying that any of our products are original equipment. All parts are guaranteed to meet with your approval.*

**This is just a sample of the parts Lecal offers for Sweepers. Call 800-543-6161 today - We Can Help!**



**LS310590** Upper Elevator Floor Plate



**LS319165** Elevator Assembly



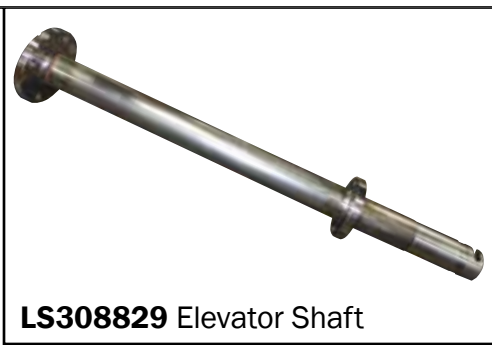
**ELEVATOR BELTS**

- LS381745** 7 Flight (single stud)
- LS34691** 7 Flight (two stud)
- LS381746** 11 Flight (single stud)



**FLIGHT ASSEMBLIES**

- LS319591**
- LS310948**



**LS308829** Elevator Shaft



**LS124194** Sprocket Sleeve



**BRACKETS**

- LS301297**
- LS301298**



**LS308292** Flange Bearing



**LS120751** Poly Idler



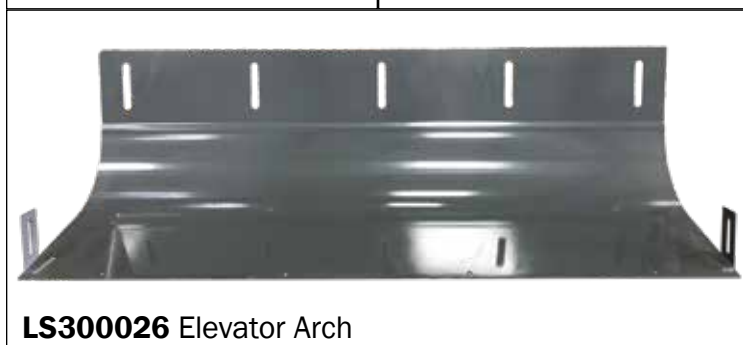
**RUBBER DIRT SHOE RUNNER**

- LS302591** RH
- LS302592** LH



**SPROCKETS**

- LS308710** **LS308717**
- LS207971** **LS329832**
- LS34780**



**LS300026** Elevator Arch



**MAIN BROOM ARMS**

- LS308918** **LS316114**

**CALL: 1.800.543.6161 • EMAIL: sales@lecal.com • FAX: 937.596.5433**

*All original equipment manufacturer's names, drawings, colors and part numbers are used for identification purposes only. We are in no way implying that any of our products are original equipment. All parts are guaranteed to meet with your approval.*

**This is just a sample of the parts Lecal offers for Sweepers. Call 800-543-6161 today - We Can Help!**



**Elevator Assemblies**



**Drag Shoe Plates & Dirt Shoe Plates**



**Elevator Flight Assemblies**

**We have parts for your MOBIL model!**  
AV445 • H10 • M8 • M8A  
M9 • M9A-M9E • RA730



**Dirt Hoppers**



**Scissor Lift Assemblies**



**Elevator Chains**



**Flight Assemblies**



**Heavy Duty Drapes**



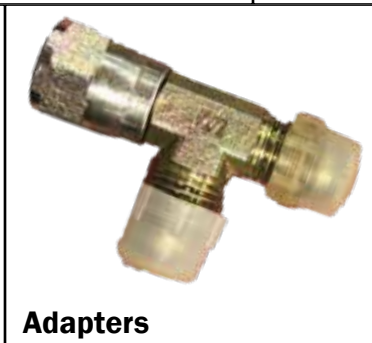
**Rear Compartments**



**Lift Links**



**Gutter Brooms**



**Adapters**



**Hydraulic Motors**

**CALL: 1.800.543.6161 • EMAIL: sales@lecal.com • FAX: 937.596.5433**

*All original equipment manufacturer's names, drawings, colors and part numbers are used for identification purposes only. We are in no way implying that any of our products are original equipment. All parts are guaranteed to meet with your approval.*



**This is just a sample of the parts Lecal offers for Sweepers. Call 800-543-6161 today - We Can Help!**

**PICKUP HEADS**



**LS520014**  
Fixed Orifice



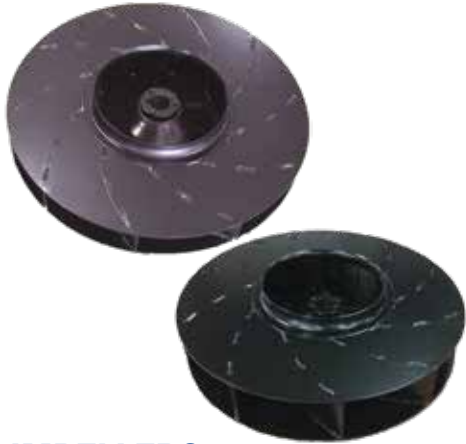
**LS521645**  
Power Hood



**LS522718**



**LS300077**  
Adj. Blast Orifice



**IMPELLERS**

**LS522339**      **LS523707**

**We have parts for your  
SCHWARZE model!**

**A7000 • A9000  
M4000 • M5000 • M6000  
S343-S348**



**LS523153** Dirt Hopper



**GUTTER BROOM ARMS**

**LS521850 LH**    **LS521851 RH**



**LS523156** Hopper Intake Tube



**HOPPER SCREENS**

**LS522760**      **LS522761**



**LS521089** Broom Tie-Rod



**LS203G49**  
Drop Down Screen Assembly



**LS522317**  
Blower Housing



**LS300279**  
Removable Transition



**LS522804**  
Quick Disconnect



**LS523170**  
Transition Tube Weldment

**CALL: 1.800.543.6161 • EMAIL: sales@lecal.com • FAX: 937.596.5433**

*All original equipment manufacturer's names, drawings, colors and part numbers are used for identification purposes only. We are in no way implying that any of our products are original equipment. All parts are guaranteed to meet with your approval.*



**This is just a sample of the parts Lecal offers for Sweepers. Call 800-543-6161 today - We Can Help!**



**LS26426** Lower Elevator Shaft

**LS203D34** Elevator Spray Bar Assembly

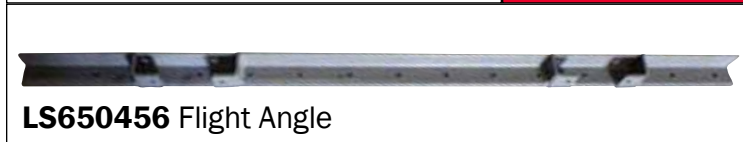


**FRAME END PLATES**  
**LS6500391ASSY RH**  
**LS6500392ASSY LH**

**We have parts for your SCHWARZE model!**  
 A7000 • A9000  
 M4000 • M5000 • M6000  
 S343-S348



**LSW811421** Dirt Hopper



**LS650456** Flight Angle



**LS6200815** Flight Angle Weld



**LS203F37** Elevator Assembly



**LS203F36** Elevator Frame



**LS6501331** Lower Elevator Liner



**LS650108** Lift Cam



**LS203D58** Gutter Broom Head Assembly LH



**LS23126** Rubber Sprockets



**LS25098** Caster Assembly



**LS24288** Pump

**CALL: 1.800.543.6161 • EMAIL: sales@lecal.com • FAX: 937.596.5433**

*All original equipment manufacturer's names, drawings, colors and part numbers are used for identification purposes only. We are in no way implying that any of our products are original equipment. All parts are guaranteed to meet with your approval.*

**This is just a sample of the parts Lecal offers for Sweepers. Call 800-543-6161 today - We Can Help!**



**LS21033** Hose



**LS520940** S Series Pickup Head

**We have parts for your  
SCHWARZE model!**

**A7000 • A9000  
M4000 • M5000 • M6000  
S343-S348**



**LS20415** Water Filter



**DIRT HOPPERS**

**LS520829**

**LS521470**

**LS522595**



**IMPELLERS**

**LS520804**

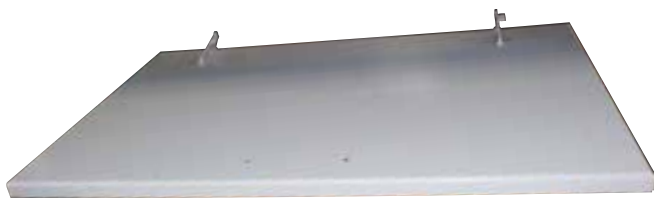
**LS521328**

**LS522319**

**LS522372**



**LS522374** Turnbuckle



**LS522600** Hopper Roof Door



**GUTTER BROOM ARMS**

**LS521850** LH

**LS521851** RH

**CALL: 1.800.543.6161 • EMAIL: sales@lecal.com • FAX: 937.596.5433**

*All original equipment manufacturer's names, drawings, colors and part numbers are used for identification purposes only. We are in no way implying that any of our products are original equipment. All parts are guaranteed to meet with your approval.*

***This is just a sample of the parts Lecal offers for Sweepers. Call 800-543-6161 today - We Can Help!***



### **DIRT SHOE PLATES**

**LS41433 LH**

**LS41435 RH**



**LS43121 Canopy**



**LS41429 Drag Link**



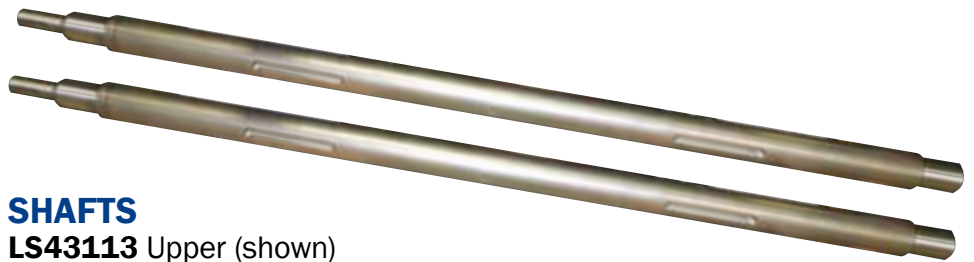
**LS41728ASSY Flight Assembly (shown)**

**LS41728 Flight Angle**

**LS41726 Rubber Flight (shown)**



**LS41738 Shaft Spacers**



### **SHAFTS**

**LS43113 Upper (shown)**

**LS43109 Lower**



**LS41480 Dirt Deflector**



**LS41740 Lock Plate**



**CALL: 1.800.543.6161 • EMAIL: [sales@lecal.com](mailto:sales@lecal.com) • FAX: 937.596.5433**

*All original equipment manufacturer's names, drawings, colors and part numbers are used for identification purposes only. We are in no way implying that any of our products are original equipment. All parts are guaranteed to meet with your approval.*



**This is just a sample of the parts Lecal offers for Sweepers. Call 800-543-6161 today - We Can Help!**

 <p><b>BLOWER HOUSINGS</b> LS501287                      LS505202</p>	 <p><b>LS505265 Pickup Head</b></p>
---	---

 <p><b>COATED IMPELLERS</b> LS5011626 LS5017256 SRE</p>	<p><b>We have parts for your TYMCO model!</b> 210 • 435 • 600 • FHD</p>	 <p><b>LS504491505023</b> Pre-Assembled Separator/Blower</p>
---	---	--

 <p><b>LS505166 Suction Tube</b></p>	 <p><b>LB321 Wire Slope Wafer</b></p>
--	--

 <p><b>PICK-UP HEAD SPRINGS</b> LS5010232                      LS5016923</p>	 <p><b>DUMP DOORS</b> LS500024                      LS505150                      LS505747</p>
--	--

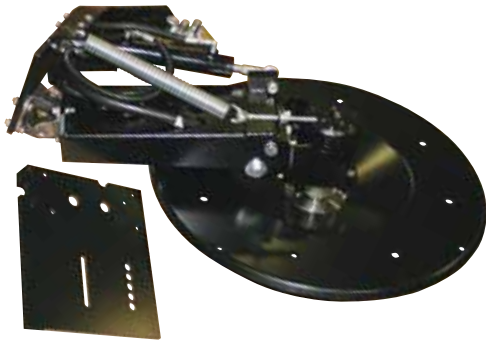
 <p><b>DIRT HOPPERS</b> LS500056                      LS505139                      LS506583</p>	 <p><b>LS500620 Curtain Set with Hardware</b></p>	 <p><b>LS504241 Blower Housing Transition</b></p>
--	---	--

**CALL: 1.800.543.6161 • EMAIL: sales@lecal.com • FAX: 937.596.5433**

All original equipment manufacturer's names, drawings, colors and part numbers are used for identification purposes only. We are in no way implying that any of our products are original equipment. All parts are guaranteed to meet with your approval.



**This is just a sample of the parts Lecal offers for Sweepers. Call 800-543-6161 today - We Can Help!**



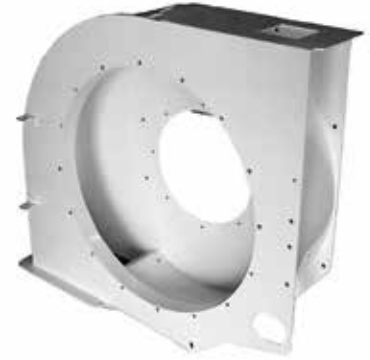
**LS503434** Pre-Assembled LH Gutter Broom with LB559 Brooms



**LS507388** Pressure Inlet (shown)  
**LS507410** Retro Fit Kit



**LS503001** Upstop



**LS505254** Blower Housing



**LS503884** Pickup Head Dolly

**We have parts for your TYMCO model!**

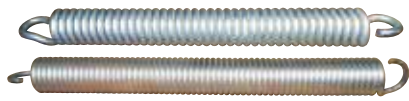
210 • 435 • 600 • FHD



**LS505260** Dirt Hopper



**LS501393** Pickup Head



**SPRINGS**  
**LS5010960** Gutter Broom  
**LS5010839** Pickup Head



**CARBIDE SKID SHOES**  
**LS500446**    **LS502569**  
**LS500460**



**LS501016** Hopper Dump Door



**LS5019485** Gutter Broom Disc



**LS5011625**  
Coated Impeller



**LS502116** Transition with Seal & Flange

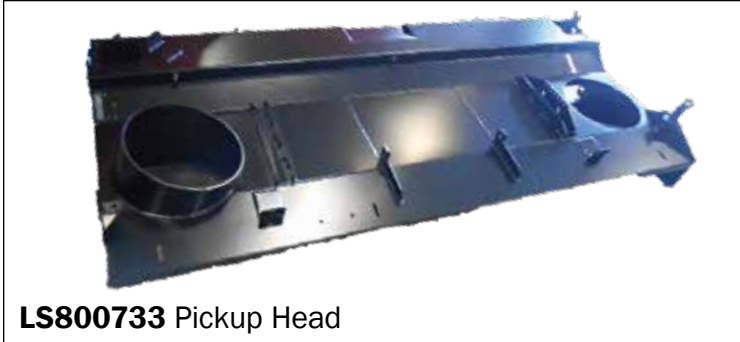


**LS5011571** Coated Separator Door

**CALL: 1.800.543.6161 • EMAIL: sales@lecal.com • FAX: 937.596.5433**

*All original equipment manufacturer's names, drawings, colors and part numbers are used for identification purposes only. We are in no way implying that any of our products are original equipment. All parts are guaranteed to meet with your approval.*

***This is just a sample of the parts Lecal offers for Sweepers. Call 800-543-6161 today - We Can Help!***



**LS800733** Pickup Head

**LS800396** Top Scroll



**LS800229** Drain Hose Weldment

**We have parts for  
your TYMCO model!**  
210 • 435 • 600 • FHD



**LS8010313** Impeller



**LS800019** Dirt Hopper



**LS800016** Dirt Hopper Dump Door



**LS800020**  
Dirt Hopper Seal Flange



**LS800033** Blower Cover



**LS800472** Plenum



**LS800027** Separator

**CALL: 1.800.543.6161 • EMAIL: sales@lecal.com • FAX: 937.596.5433**

*All original equipment manufacturer's names, drawings, colors and part numbers are used for identification purposes only. We are in no way implying that any of our products are original equipment. All parts are guaranteed to meet with your approval.*